



Name: _____

Date: _____

Natural Resources

Lesson 1: The Solve

Student Handout

I. Read Mosa Mack's Comic Mystery

Read or [watch](#) Mosa Mack's Comic Mystery on Natural Resources and answer the questions below. Include the page number where you found your answer.

Episode Mystery Questions

1. What may stop summer vacation plans for students and their families?
2. What are three types of fossil fuels?
3. Place the steps below into the correct order to show how fossil fuels are formed over millions of years.

a.	Heat and pressure turn the carbon into fossil fuels.
b.	Plants and sea creatures die and some of their carbon gets buried.
c.	Earth piles on top of the plant and animal remains.

4. List one problem that can occur with the use of fossil fuels such as coal, oil, or natural gas.





MOSA MACK SCIENCE

STUDENT GUIDE

5. Name two other types of natural resources that can be used over and over to create energy.
6. What did Mosa figure out? How can the kids' vacations be saved?

II. Vocabulary Activity

Follow the steps below to complete the activity, or complete it online [here](#).

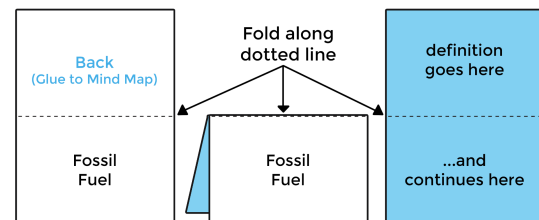
1. Use the materials at your table to cut out your vocabulary cards along the solid lines. Do not cut the dotted lines.

2. Fold the cards at the dotted lines.

3. Write the definition of each term on the inside of the card using the definitions below.

4. Use the clues from the Vocabulary Mind Map to place the cards in the correct location. Explain your thinking to your group as you go.
5. When you're ready to glue or tape, raise your hand so your teacher can check your Mind Map.
6. Use glue or double-sided tape to connect the back of the vocabulary card to the correct place on the Mind Map.

Vocab Cards: [How To](#)





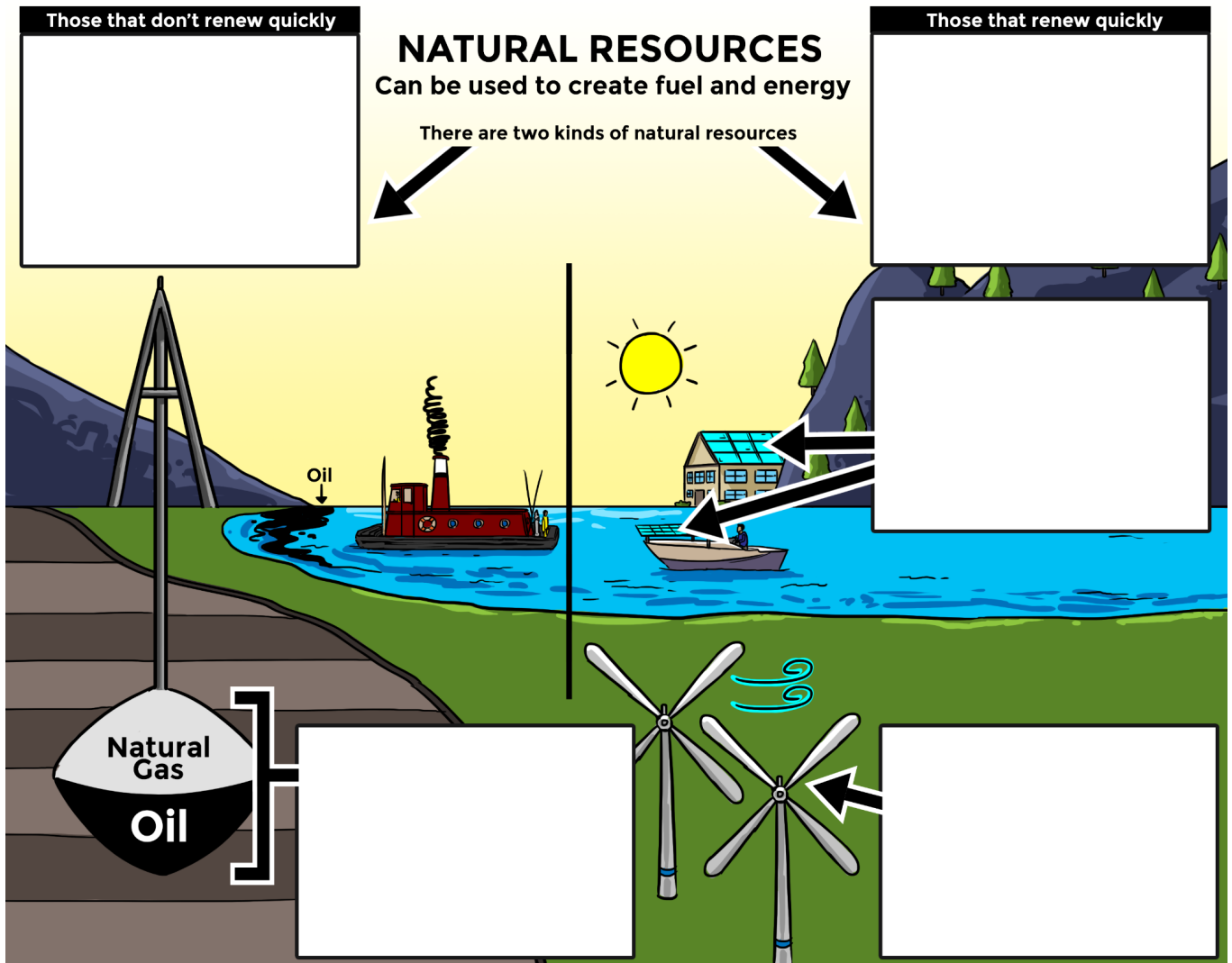
MOSA MACK SCIENCE

STUDENT GUIDE

7. Discuss with your group:
- What are some examples of natural resources that humans can use for energy and survival?
 - What renewable forms of energy are shown in the Mind Map?
 - What environmental problems can occur through the use of fossil fuels?



Mind Map





MOSA MACK SCIENCE

STUDENT GUIDE

Vocabulary Cards

Non-Renewable Resource	Wind Energy	Renewable Resource
Fossil Fuel	Solar Energy	

Vocabulary Definitions

- **Renewable Resource:** a resource that can naturally refill and keep up with human usage
- **Nonrenewable Resource:** a resource that cannot quickly or easily refill naturally
- **Fossil Fuel:** natural fuels such as coal, oil or gas that formed over millions of years from the remains of dead plants and animals.
- **Solar Energy:** energy from the sun
- **Wind Energy:** energy created by turbines that turn the wind's motion into energy that can be used for power



MOSA MACK SCIENCE

STUDENT GUIDE

Name: _____

Date: _____

III. Exit Ticket: Check for Understanding

Complete the exit ticket below, or you can take the [quiz](#) online!

1. Which of the following is a renewable form of energy?
 - a. Coal
 - b. Wind
 - c. Natural Gas
 - d. Oil
2. What type of device is designed to capture a renewable form of energy?
 - a. Solar Panel
 - b. Plane
 - c. Boat
 - d. Car
3. Which of the following is a type of nonrenewable energy?
 - a. Solar
 - b. Water
 - c. Trees
 - d. Oil
4. True or False: It takes millions years for fossil fuels to form.
 - a. True
 - b. False
5. Which of the following are problems with the use of fossil fuels?
 - a. Burning fossil fuels releases more carbon dioxide into the atmosphere, causing the planet to warm.
 - b. Mining coal can damage the land.
 - c. Fossil fuels take millions of years to form and once we use all of them in a location, they are gone.
 - d. All of the above